

Westways

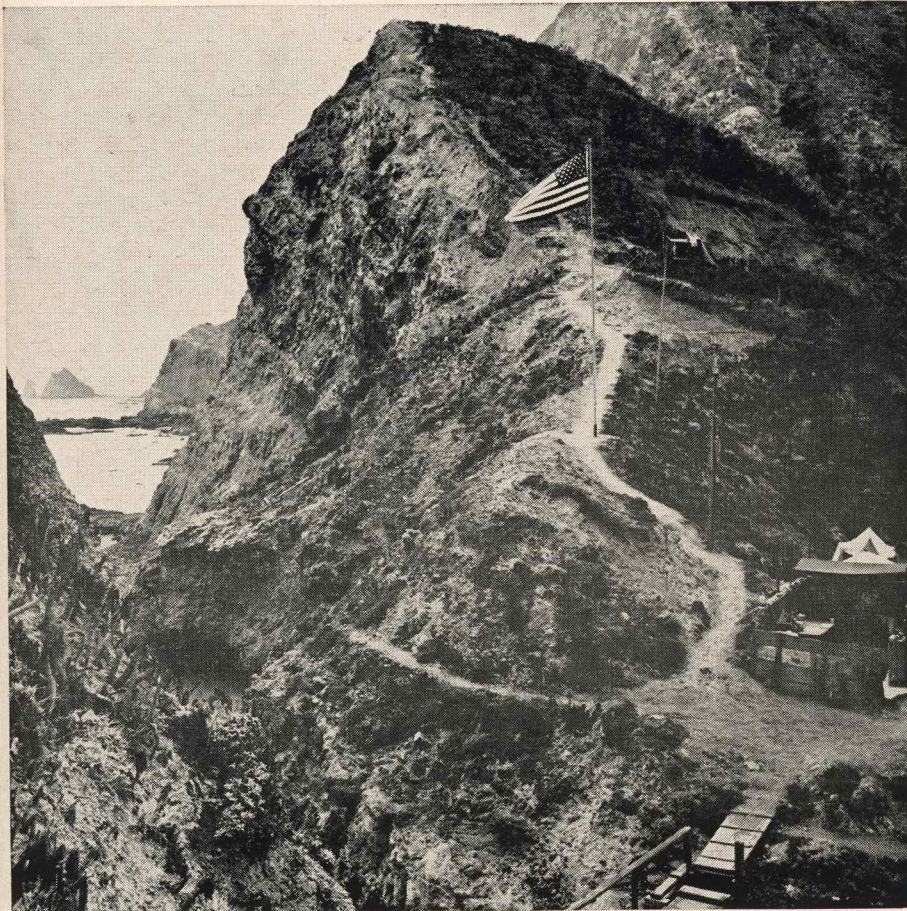
MAY 1962



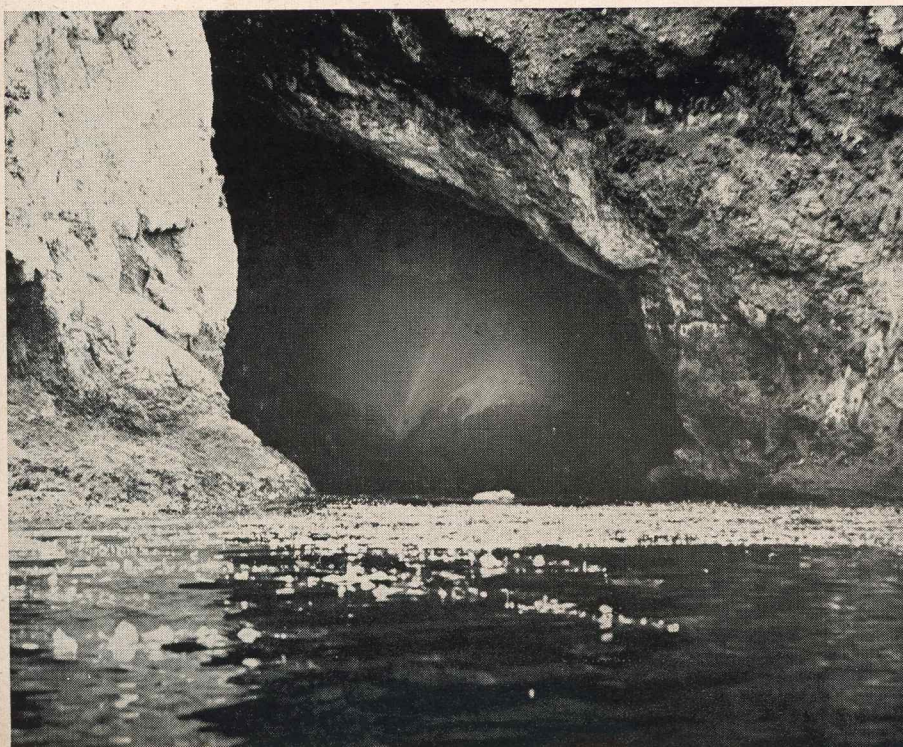
GEO. F. WEST
431 S ALANDELE AVE
LOS ANGELES 36 CALIF

Discover *Anacapa*

Photographs by Gathel and Jean Weston



• Anacapa is a small chain of razorback rocks about five miles long and up to half a mile wide. There are no facilities on the island at present except an old-fashioned, but clean, out-house

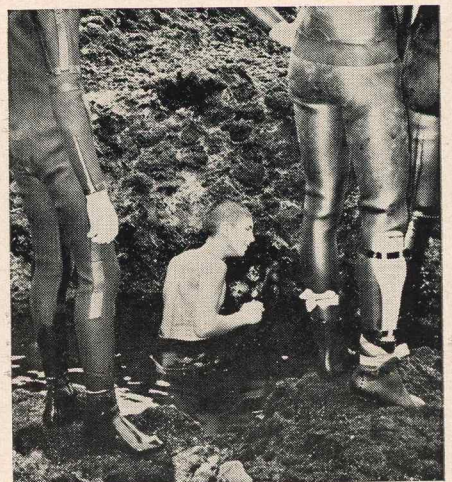


ANACAPA National Monument, an island twelve miles south of Ventura, was opened to the public in 1959. Though it has no facilities now, the National Park Service hopes to build a pier and a small museum there.

A water taxi, operated by the Channel Islands Transportation Co., P.O. Box 45, Port Hueneme, leaves for the island from Dock 1, Port Hueneme at 8 A.M. on weekends and holidays through the summer. Fare is \$5.50, half fare for children, and there's a fee of \$1.00 for transporting skin diving air tanks. Since the boat accommodates only fifty passengers, reservations are advisable.



• The giant coreopsis is common to the steep slopes of the island where it grows as high as a man's head. Its gold flowers appear in April



• Squid, lobsters and abalone abound in the tide pools and offshore waters to tempt skin divers. Even a sea otter sometimes appears

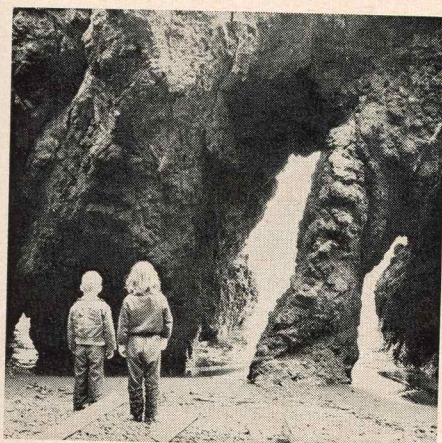
• The water in the large sea cave is so clear it is like floating in air to swim there. Sun is reflected from seaweed in the foreground



• The surf curves arches and caves from the island's rocky cliffs, making of the shore a marvelous place for exploration and adventure

• A dozen or so campers visit the island each weekend. They must bring everything they need, including fresh drinking water

• Campers and all supplies for a weekend on the island must be landed through the surf at Anacapa until the Park Service builds a pier



• The water taxi anchors a few hundred feet from shore and passengers take their equipment to the beach in a small skiff

